



**Australian
Bureau of
Statistics**

CATALOGUE NO. 7215.0
EMBARGOED UNTIL 11.30 A.M. 9 JANUARY 1996

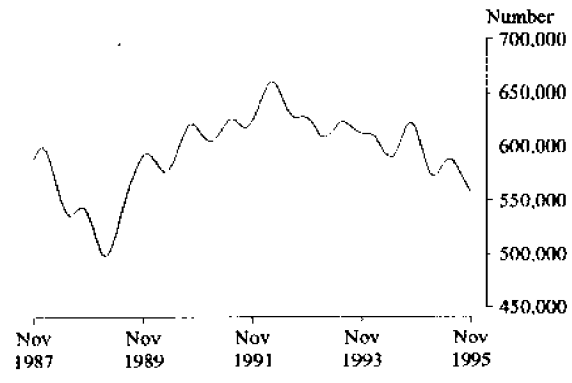
**LIVESTOCK PRODUCTS, AUSTRALIA
NOVEMBER 1995**

MAIN FEATURES

Livestock Slaughtering

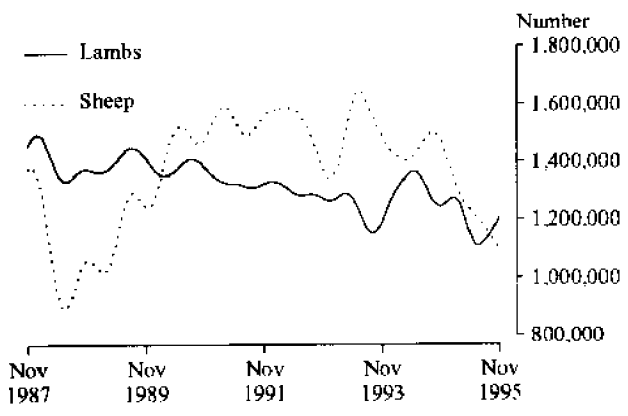
The trend estimate for cattle slaughtering fell for the fifth successive month, by 1.4 per cent in November 1995, to be 5.1 per cent below the last peak, in June 1995. The trend estimate for calves fell marginally from October and since the last peak in July 1995 has fallen 1.3 per cent.

**CATTLE SLAUGHTERINGS
AUSTRALIA
Trend Series**



Sheep slaughtering have fallen 27.2 per cent since the last peak in September 1994. The monthly slaughter rate continued to decline in November, falling 2.5 per cent compared with October. The trend estimate for lamb slaughtering rose 2.3 per cent in

**SHEEP AND LAMB SLAUGHTERINGS
AUSTRALIA
Trend Series**



November 1995, and is 8.4 per cent higher than the last trough in July 1995.

The trend estimate for pig slaughtering fell by 1.5 per cent and is now 8.8 per cent below the last peak in November 1994.

Red Meat

The trend estimate for red meat fell marginally from the previous month and is down 2.7 per cent since the last peak in June 1995. The trend estimate for beef has fallen 4.0 per cent since the last peak in June 1995. The trend estimate for mutton fell 1.2 per cent from October 1995 and has fallen 22.7 per cent since the last peak in August 1994. The trend estimate for lamb rose by 3.0 per cent in November 1995 and has risen 15.7 per cent since the last trough in June 1995. Pig meat fell 2.1 per cent compared with October and has fallen 8.1 per cent since the last peak in May 1995.

Whole Milk Intake

The trend estimate for whole milk intake by factories for October 1995 rose marginally. Since the last trough in March 1995 it has risen by 10.0 per cent.

Wool Receivals by Brokers and Dealers

The trend estimate for wool receivals by brokers and dealers rose 1.2 per cent in November 1995. This estimate is the third consecutive monthly rise, but is 7.8 per cent below the February 1995 peak.

Live Exports

The number of live sheep exported in October fell by 34.8 per cent to 269,500. The unit value (\$36.06) fell 10 per cent and the gross value (\$9.7 million) fell 41.3 per cent.

Live cattle exports rose 23.4 per cent in October 1995. The unit value (\$539.23) fell 2.1 per cent, while gross value (\$24.8 million) rose 20.8 per cent. Live cattle exports are 75.7 per cent higher during the 4 months ended October 1995 than during the corresponding period in 1994.

INQUIRIES

- for further information about statistics in this publication and the availability of related unpublished statistics — contact Oksana Melnyk on Canberra (06) 252 5226 or any ABS State office.
- for information about other ABS statistics and services please contact Information Services on (06) 252 6627, 252 6007 or any ABS State Office.

TABLE 1. NUMBERS OF LIVESTOCK SLAUGHTERED
('000)

	<i>NSW</i>	<i>Vic.</i>	<i>Qld</i>	<i>SA</i>	<i>WA</i>	<i>Tas.</i>	<i>Aust.</i>	<i>Seas- onally adjusted</i>	<i>Trend estimate(b)</i>
BULLS, BULLOCKS AND STEERS (a)									
1992-93	1,072.7	778.3	1,713.1	258.6	271.9	99.0	4,256.4
1993-94	1,008.5	772.0	1,700.5	199.0	271.2	101.8	4,070.0
1994-95	1,105.6	782.7	1,597.1	206.1	243.4	110.1	4,054.7
<i>1994-95 —</i>									
September	107.4	61.1	179.9	17.8	21.1	6.3	395.4	356.8	344.9
October	95.6	64.1	152.8	24.4	22.8	6.2	367.5	345.8	351.3
November	113.9	76.3	160.0	17.7	24.8	9.3	402.6	350.9	353.2
December	84.7	69.8	120.1	26.3	26.0	11.3	338.3	376.4	348.0
January	82.5	62.3	71.7	18.3	20.3	11.3	266.3	335.0	338.3
February	83.0	66.3	95.7	17.8	19.1	9.5	291.3	315.1	328.9
March	100.7	66.2	113.8	20.8	23.4	13.0	338.1	320.7	323.8
April	80.2	59.8	109.2	13.1	14.1	9.5	286.0	310.4	324.3
May	94.2	72.4	125.7	17.6	18.0	10.9	339.5	312.5	328.0
June	79.8	76.2	163.8	12.7	18.4	10.5	362.9	373.9	331.7
<i>1995-96 p--</i>									
July	74.8	68.9	135.1	7.6	17.1	8.1	315.2	326.8	331.7
August	88.0	69.4	159.4	11.4	18.7	5.0	357.8	336.5	327.1
September	78.5	63.0	153.0	19.4	17.4	5.6	338.9	306.8	320.7
October	78.1	80.4	110.2	21.6	21.7	7.0	321.3	299.8	314.6
November	81.2	85.5	134.6	23.3	27.9	8.8	363.4	318.8	308.7
<i>5 Months ended November --</i>									
1994	500.3	309.8	797.2	79.4	104.0	34.1	1,832.2
1995 p	400.6	367.1	692.3	83.3	102.8	34.5	1,696.6
COWS AND HEIFERS (a)									
1992-93	985.5	587.5	1,138.3	149.7	180.5	90.4	3,186.2
1993-94	979.4	622.0	1,081.4	201.4	167.6	85.2	3,220.1
1994-95	945.4	684.6	960.7	218.1	186.1	97.7	3,165.7
<i>1994-95 —</i>									
September	86.9	64.8	94.5	17.0	16.8	5.7	296.5	292.0	275.4
October	86.9	63.7	72.7	11.9	15.1	6.9	262.3	274.6	272.6
November	87.3	57.3	64.2	21.4	16.4	7.5	259.0	251.4	266.5
December	69.1	52.6	57.9	11.1	19.9	9.2	222.6	259.9	258.7
January	65.9	52.1	40.6	22.3	17.0	7.9	208.8	263.3	252.4
February	66.5	52.3	60.2	21.5	17.2	8.5	229.3	236.1	250.2
March	78.4	67.0	80.0	25.1	17.2	12.0	283.7	253.2	251.4
April	72.5	52.8	65.6	19.8	14.6	9.8	238.3	241.8	254.0
May	96.0	65.3	112.3	22.3	14.8	10.3	327.1	268.9	256.3
June	86.7	57.5	94.9	21.1	10.1	10.3	290.4	277.0	257.7
<i>1995-96 p—</i>									
July	75.0	44.6	76.4	13.1	12.0	5.8	232.5	237.8	257.8
August	83.6	44.6	90.4	16.0	15.1	4.8	262.2	256.8	256.4
September	79.1	43.2	86.7	17.2	17.6	4.4	259.5	257.9	254.9
October	80.7	51.2	67.0	16.2	18.1	6.3	247.0	252.9	254.0
November	85.7	57.7	68.8	17.6	15.6	7.1	259.7	254.3	252.2
<i>5 Months ended November —</i>									
1994	410.4	285.1	449.3	74.9	75.2	29.7	1,365.5
1995 p	404.1	241.3	389.4	80.2	78.4	28.4	1,260.8

TABLE 1. NUMBERS OF LIVESTOCK SLAUGHTERED

('000)—continued

	NSW	Vic.	Qld	SA	WA	Tas.	Aust.	Seas- onally adjusted	Trend estimate(b)
TOTAL CATTLE (excludes calves) (a)									
1992-93	2,058.1	1,365.8	2,851.5	408.3	452.3	189.4	7,442.6
1993-94	1,987.9	1,393.9	2,781.8	400.3	438.8	187.0	7,290.1
1994-95	2,051.0	1,467.3	2,557.8	424.2	429.5	207.8	7,220.4
<i>1994-95 —</i>									
September	194.3	125.9	274.4	34.8	37.9	12.0	691.9	647.3	619.9
October	182.5	127.8	225.6	36.3	37.9	13.1	629.7	620.1	624.5
November	201.2	133.6	224.2	39.1	41.2	16.8	661.5	604.8	620.8
December	153.9	122.4	178.0	27.4	45.9	20.5	560.9	645.0	608.0
January	148.4	114.3	112.3	40.6	37.3	19.2	475.1	591.0	592.1
February	149.6	118.6	155.9	39.3	36.3	17.9	520.7	552.3	580.5
March	179.1	133.2	193.8	46.0	40.6	25.0	621.8	572.3	575.8
April	152.7	112.5	174.8	32.9	28.8	19.3	524.4	559.3	578.1
May	190.2	137.7	237.9	39.9	32.9	21.2	666.6	589.0	583.5
June	166.5	133.7	258.7	33.8	28.6	20.8	653.2	631.0	588.2
<i>1995-96 p—</i>									
July	149.9	113.5	211.6	20.7	29.2	13.9	547.6	569.7	588.0
August	171.6	114.0	249.8	27.4	33.8	9.8	620.1	586.3	581.8
September	157.5	106.2	239.7	36.6	35.0	10.0	598.4	577.1	573.8
October	158.9	131.6	177.2	37.8	39.9	13.3	568.2	544.4	566.4
November	166.9	143.1	203.3	40.9	43.4	15.9	623.1	568.1	558.5
<i>5 Months ended November —</i>									
1994	910.7	594.9	1,246.4	154.3	179.2	63.8	3,197.7
1995 p	804.8	608.4	1,081.7	163.5	181.2	62.8	2,957.4
CALVES									
1992-93	224.2	608.5	153.8	9.2	4.6	32.7	1,034.1
1993-94	221.4	583.4	148.7	8.8	4.4	23.2	991.6
1994-95	248.3	635.6	115.7	12.0	4.4	28.7	1,046.9
<i>1994-95</i>									
September	21.8	123.3	11.0	1.3	0.5	11.6	169.8	88.8	91.3
October	22.8	62.1	9.4	1.1	0.3	2.9	98.7	95.7	91.1
November	22.9	24.7	8.6	1.0	0.3	0.5	58.3	95.8	90.4
December	13.0	7.9	8.7	0.7	0.4	0.1	30.9	85.0	88.5
January	18.6	5.8	9.8	1.0	0.5	0.1	35.9	87.2	85.8
February	17.9	4.8	8.8	0.6	0.3	0.1	32.7	79.6	83.3
March	25.0	11.0	10.1	1.2	0.4	0.4	48.4	85.4	81.9
April	17.0	24.3	8.1	0.8	0.3	1.0	51.7	75.5	81.7
May	21.3	47.6	10.5	1.3	0.3	1.2	82.4	79.1	82.3
June	23.0	74.2	10.9	1.1	0.2	0.9	110.6	93.8	83.0
<i>1995-96 p—</i>									
July	18.9	81.6	9.6	1.1	0.3	1.1	112.6	85.8	83.3
August	24.2	137.0	8.9	1.4	0.3	14.0	185.8	71.4	83.2
September	19.8	119.3	7.3	1.2	0.2	16.6	164.6	89.1	82.9
October	18.5	53.8	7.4	1.0	0.3	5.3	86.3	81.2	82.7
November	21.2	20.8	6.7	0.7	0.3	0.8	50.7	82.8	82.2
<i>5 Months ended November —</i>									
1994	112.5	459.9	48.8	5.3	2.0	24.8	654.3
1995 p	102.5	412.5	39.8	5.4	1.3	37.8	599.9

TABLE 1. NUMBERS OF LIVESTOCK SLAUGHTERED
(*000)—continued

	NSW	Vic.	Qld	SA	WA	Tas.	Aust.	Seasonally adjusted	Trend estimate(b)
SHEEP									
1992-93	5,233.6	3,722.6	1,389.2	2,769.7	3,752.3	473.4	17,525.0
1993-94	6,066.9	3,975.9	856.6	3,078.3	2,952.2	526.1	17,641.0
1994-95	6,577.8	3,229.6	480.2	3,108.9	2,391.6	565.5	16,503.5
<i>1994-95 —</i>									
September	648.8	251.1	53.1	346.6	198.9	39.4	1,551.2	1,672.6	1,503.1
October	656.0	340.3	45.0	303.6	214.2	36.2	1,608.1	1,504.7	1,499.6
November	704.9	414.7	37.0	374.1	195.8	63.2	1,805.9	1,454.4	1,476.1
December	537.6	351.7	27.8	310.2	230.7	64.2	1,533.5	1,398.8	1,432.7
January	534.4	339.6	28.8	301.9	220.2	50.1	1,485.6	1,417.1	1,376.2
February	488.9	330.6	28.0	277.9	217.1	58.6	1,411.7	1,285.2	1,322.6
March	560.6	295.1	37.8	320.6	242.4	68.6	1,537.1	1,296.6	1,282.4
April	457.5	182.6	34.5	245.6	191.7	46.3	1,171.7	1,214.0	1,253.3
May	557.6	186.2	39.1	219.9	198.5	43.6	1,258.7	1,260.0	1,230.3
June	434.3	147.3	38.6	116.0	145.9	42.8	935.0	1,200.8	1,212.9
<i>1995-96 p—</i>									
July	452.8	150.0	37.6	87.4	145.0	18.6	902.1	1,196.7	1,195.8
August	437.3	160.7	38.3	128.0	191.2	18.2	984.3	1,200.7	1,173.8
September	434.3	197.4	38.9	189.7	161.6	18.0	1,050.2	1,114.0	1,147.7
October	524.5	279.5	29.7	206.9	194.9	25.5	1,270.6	1,185.0	1,121.2
November	412.8	280.8	29.5	240.3	231.6	36.5	1,245.4	1,022.5	1,093.5
<i>5 Months ended November —</i>									
1994	3,006.9	1,396.5	245.5	1,316.8	945.2	191.4	7,170.3
1995 p	2,261.6	1,068.4	174.0	852.3	924.2	116.8	5,452.5
LAMBS									
1992-93	4,140.2	6,288.1	648.0	2,062.3	1,480.8	456.5	15,434.9
1993-94	3,991.7	5,600.8	669.6	2,363.8	1,553.2	437.8	14,967.2
1994-95	4,133.7	6,303.2	469.8	1,917.6	1,262.3	475.6	14,950.4
<i>1994-95 —</i>									
September	352.1	570.5	42.6	208.7	167.9	37.2	1,413.3	1,309.9	1,274.7
October	321.8	578.2	31.8	142.1	163.1	30.4	1,300.4	1,154.2	1,252.4
November	315.0	619.2	27.1	175.9	82.9	37.3	1,286.8	1,161.4	1,249.6
December	276.1	516.8	22.7	152.7	121.6	41.3	1,157.6	1,248.0	1,264.9
January	413.3	511.6	28.4	158.0	91.0	40.7	1,274.1	1,427.0	1,282.2
February	292.1	478.4	27.2	165.1	113.5	37.1	1,144.1	1,278.8	1,284.1
March	352.0	522.8	46.7	190.2	117.2	48.3	1,315.7	1,254.8	1,256.8
April	318.6	464.2	46.8	141.2	97.8	41.1	1,145.3	1,233.8	1,204.1
May	337.7	512.0	52.0	143.7	96.2	41.1	1,218.6	1,137.3	1,147.3
June	269.2	453.2	44.6	110.7	61.8	44.8	1,005.4	1,056.4	1,112.2
<i>1995-96 p—</i>									
July	274.3	449.5	38.1	97.5	53.5	25.6	960.6	1,062.4	1,108.7
August	324.1	494.8	40.1	167.0	92.3	27.3	1,176.1	1,097.7	1,125.2
September	306.5	524.5	39.5	214.0	149.6	29.0	1,290.8	1,223.8	1,149.7
October	308.9	614.9	37.3	223.6	153.1	28.6	1,393.4	1,193.3	1,175.4
November	288.0	586.9	32.8	200.8	126.8	34.9	1,303.8	1,198.0	1,202.8
<i>5 Months ended November —</i>									
1994	1,874.8	2,844.2	201.5	855.8	563.3	181.1	6,689.7
1995 p	1,501.8	2,670.7	187.9	902.8	575.3	145.5	6,124.7

TABLE 1. NUMBERS OF LIVESTOCK SLAUGHTERED
(^{'000})—continued

	NSW	Vic.	Qld.	SA	WA	Tas.	Aust.	Seas- onally adjusted	Trend estimate(b)
	PIGS								
1992-93	1,480.5	1,070.8	1,155.3	568.2	567.6	92.5	5,031.7
1993-94	1,490.9	1,188.5	1,207.9	562.1	550.4	95.8	5,190.2
1994-95	1,505.4	1,196.9	1,154.4	470.1	603.3	92.9	5,120.0
<i>1994-95 --</i>									
September	124.5	110.1	104.9	36.8	47.4	7.9	439.2	435.6	431.4
October	121.5	100.3	94.3	41.4	48.0	6.7	420.2	446.0	433.7
November	129.2	97.6	99.6	51.3	52.9	8.0	448.1	429.3	434.0
December	142.6	104.9	94.3	37.6	49.5	9.7	445.8	428.8	431.3
January	110.0	88.9	80.4	35.2	42.9	5.8	369.9	428.6	427.2
February	114.4	89.9	91.2	42.2	46.2	7.0	398.1	430.2	423.7
March	131.8	106.7	103.2	33.4	52.8	8.8	445.2	414.3	421.3
April	113.0	85.9	85.7	30.1	51.1	7.2	380.2	404.6	419.7
May	132.8	114.9	100.4	43.0	56.3	8.2	464.8	429.4	418.7
June	139.4	106.7	107.0	34.2	57.5	8.6	459.9	435.9	417.3
<i>1995-96 p—</i>									
July	117.9	87.9	86.5	33.4	52.6	6.5	391.4	401.3	414.9
August	120.2	100.5	96.0	37.5	52.4	7.3	422.3	398.4	411.1
September	127.0	93.2	97.5	32.4	50.5	7.1	414.8	423.2	406.2
October	114.1	97.1	85.0	30.8	50.6	6.1	390.4	406.0	401.1
November	115.8	96.6	89.8	36.6	47.8	6.9	401.5	381.9	395.2
<i>5 Months ended November—</i>									
1994	621.5	498.9	492.0	214.5	247.1	37.5	2,156.1
1995 p	595.1	475.3	454.8	170.5	254.0	34.0	2,020.4

(a) Domesticated buffaloes slaughtered in the Northern Territory are included in Australian totals. (b) Trend estimates for the most recent months are subject to revision when data for subsequent months become available.

TABLE 2. RED MEAT PRODUCED (a)
(Tonnes carcass weight)

	NSW	Vic.	Old	SA	WA	Tas.	Aust.	Seasonally adjusted	Trend estimate(b)
BEEF (c)									
1992-93	472,313	299,907	753,477	96,338	100,196	44,925	1,786,860
1993-94	466,387	315,279	742,701	94,395	101,513	47,458	1,786,224
1994-95	471,183	335,059	697,750	99,121	96,920	49,661	1,764,955
<i>1994-95 ---</i>									
September	44,635	32,214	76,635	8,132	8,459	2,824	175,281	164,441	151,976
October	42,057	28,569	60,905	8,284	8,764	3,160	152,962	153,042	152,544
November	45,279	30,214	62,907	8,927	9,348	4,143	161,861	143,316	151,215
December	35,033	27,486	49,828	8,859	10,569	5,104	137,474	154,077	147,953
January	34,189	25,942	31,450	9,623	8,421	4,787	115,028	146,403	144,185
February	34,356	26,446	44,006	9,445	8,270	4,360	127,511	134,948	141,695
March	42,031	30,505	53,539	11,089	9,373	5,931	153,274	138,989	140,712
April	35,011	25,433	48,232	7,764	6,501	4,370	127,872	141,559	141,054
May	42,774	31,384	63,477	9,421	7,332	4,881	160,567	141,419	141,724
June	36,792	30,983	65,044	7,723	6,179	4,864	153,651	147,849	142,253
<i>1995-96 p---</i>									
July	34,180	25,310	57,869	3,526	6,130	3,695	131,870	139,985	142,029
August	39,259	23,804	66,485	6,588	7,515	2,312	148,690	141,082	140,738
September	36,128	23,831	64,916	8,850	7,872	2,354	146,288	140,954	139,167
October	35,769	30,513	47,280	9,377	9,292	3,151	137,228	133,118	137,697
November	39,480	33,692	56,512	9,914	10,126	3,846	155,321	137,800	136,419
<i>5 Months ended November ---</i>									
1994	210,998	136,880	342,173	35,197	40,275	15,364	789,578
1995 p	184,815	137,150	293,062	38,255	40,935	15,358	719,397
VEAL									
1992-93	15,448	14,948	7,179	320	303	692	38,954
1993-94	17,551	13,466	6,352	302	296	515	38,581
1994-95	16,677	14,428	4,918	435	285	1,161	38,029
<i>1994-95 ---</i>									
September	1,395	2,763	445	55	31	424	5,124	3,474	3,364
October	1,378	1,367	382	39	22	125	3,321	3,333	3,353
November	1,460	608	338	44	23	18	2,507	3,394	3,307
December	867	275	341	27	26	10	1,554	3,057	3,231
January	1,266	227	387	46	33	11	1,981	3,105	3,135
February	1,198	203	365	25	22	195	2,015	3,101	3,038
March	1,751	328	448	39	25	18	2,621	3,243	2,948
April	1,114	582	336	27	17	36	2,119	2,569	2,879
May	1,439	1,072	484	35	16	39	3,100	2,758	2,846
June	1,623	1,572	482	31	14	38	3,770	2,918	2,851
<i>1995-96 p---</i>									
July	1,286	1,642	425	31	17	30	3,438	2,907	2,886
August	1,659	2,773	358	39	19	353	5,210	2,854	2,934
September	1,327	2,416	274	36	16	418	4,494	3,180	2,970
October	1,299	1,170	292	32	17	141	2,958	2,914	2,996
November	1,350	520	263	26	18	24	2,210	2,932	2,993
<i>5 Months ended November ---</i>									
1994	7,419	10,171	2,077	205	132	814	20,869
1995 p	6,921	8,521	1,613	163	87	967	18,309

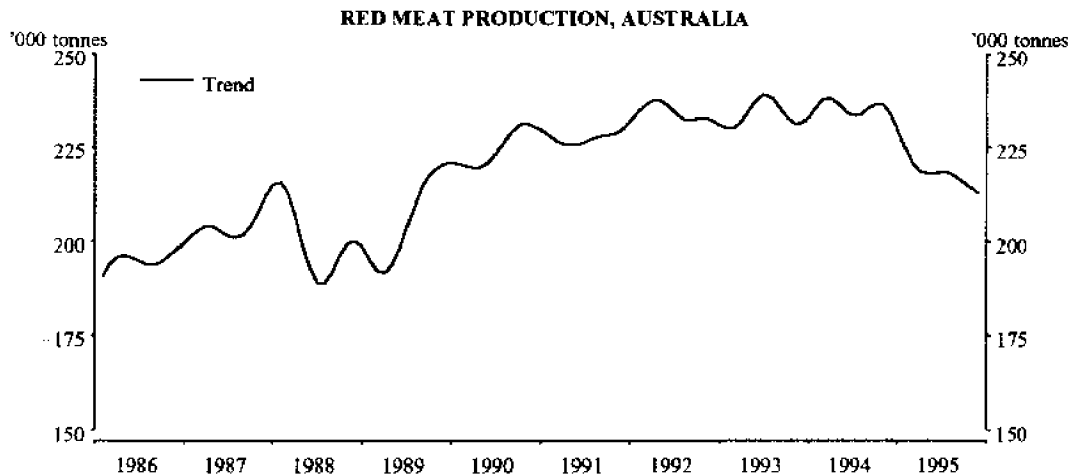
TABLE 2. RED MEAT PRODUCED (a)
(Tonnes carcass weight)—continued

	NSW	Vic.	Qld	SA	WA	Tas.	Aust.	Seasonally adjusted	Trend estimate(b)
MUTTON									
1992-93	105,819	81,907	26,656	65,689	76,921	8,949	369,953
1993-94	127,582	85,010	17,326	71,354	61,731	9,992	376,764
1994-95	131,052	64,440	9,479	66,623	47,002	11,157	332,683
<i>1994-95 -</i>									
September	13,039	5,121	1,051	7,529	4,029	773	31,791	32,807	30,142
October	13,385	7,070	917	6,603	4,042	723	33,034	30,251	30,004
November	14,445	8,459	722	8,282	3,849	1,277	37,371	29,425	29,666
December	10,976	6,956	537	6,281	4,777	1,275	31,557	28,625	28,996
January	10,742	6,657	543	6,409	4,344	969	29,877	29,241	27,958
February	9,366	6,431	560	5,883	4,273	1,130	27,827	25,592	26,783
March	10,960	5,578	744	6,753	4,740	1,311	30,318	26,036	25,794
April	8,894	3,478	672	5,054	3,633	884	22,805	24,926	25,068
May	10,509	3,695	763	4,543	3,880	895	24,521	24,332	24,580
June	8,400	2,917	763	2,495	2,891	877	18,554	23,817	24,348
<i>1995-96 p—</i>									
July	9,155	2,978	715	1,967	2,843	389	18,270	24,593	24,240
August	9,000	3,240	684	3,061	3,822	378	20,428	25,115	24,071
September	9,267	4,092	763	4,525	3,094	372	22,300	22,484	23,821
October	11,505	5,850	578	5,002	3,875	529	27,520	25,117	23,535
November	9,031	5,922	566	6,001	4,394	797	27,006	21,865	23,246
<i>5 Months ended November —</i>									
1994	61,204	28,730	4,896	28,704	18,463	3,815	147,224
1995 p	47,958	22,082	3,307	20,556	18,028	2,464	115,523
LAMB									
1992-93	72,608	113,220	10,570	39,334	23,395	7,456	273,424
1993-94	69,246	101,386	11,072	45,199	24,936	7,047	265,424
1994-95	71,738	111,202	7,942	36,195	19,250	8,083	261,900
<i>1994-95 -</i>									
September	6,289	9,613	723	3,934	2,589	386	24,446	23,380	22,998
October	5,665	10,075	535	2,509	2,499	565	22,427	19,997	22,269
November	5,549	10,944	453	3,244	1,220	657	22,953	21,350	21,850
December	4,546	8,999	385	2,816	1,866	691	19,805	21,702	21,788
January	5,475	9,168	496	2,972	1,437	681	20,803	22,836	21,862
February	5,085	8,525	473	3,128	1,834	615	20,270	22,258	21,799
March	6,466	9,378	790	3,703	1,717	808	23,373	21,801	21,351
April	5,632	7,884	787	2,691	1,480	689	19,718	20,847	20,605
May	5,971	9,183	867	2,723	1,410	761	21,522	19,591	19,918
June	4,818	7,991	726	2,046	856	829	17,668	18,658	19,687
<i>1995-96 p—</i>									
July	4,955	7,997	643	1,799	925	481	17,220	19,310	19,989
August	5,845	8,997	684	3,204	1,609	514	21,430	19,976	20,650
September	5,519	9,741	715	4,212	2,494	546	23,745	23,280	21,419
October	5,612	11,474	657	4,455	2,438	540	25,718	22,260	22,147
November	5,196	10,921	565	4,017	2,062	659	24,057	22,636	22,812
<i>5 Months ended November —</i>									
1994	33,745	50,074	3,418	16,118	8,650	3,009	118,741
1995 p	27,128	49,130	3,265	17,688	9,527	2,740	112,170

TABLE 2. RED MEAT PRODUCED (a)
(Tonnes carcass weight)—continued

	NSW	Vic.	Old	SA	WA	Tas.	Aust.	Seasonally adjusted	Trend estimate(b)
PIGMEAT									
1992-93	94,760	70,535	79,749	38,153	33,562	5,749	328,317
1993-94	98,606	78,488	84,553	38,394	32,423	6,019	344,260
1994-95	102,175	84,727	83,143	33,033	36,914	6,132	352,262
1994-95 —									
September	8,879	7,379	7,617	2,550	2,846	549	30,405	29,164	29,207
October	7,971	7,088	6,881	3,094	2,882	474	28,903	30,824	29,425
November	8,452	7,216	7,186	3,784	2,990	493	30,727	29,348	29,433
December	8,792	7,303	6,469	2,929	3,113	649	29,681	29,057	29,262
January	7,143	6,182	5,669	2,368	2,500	381	24,632	28,995	29,088
February	7,254	6,187	6,608	2,684	2,580	464	26,199	28,707	29,054
March	9,617	7,471	7,302	2,285	3,233	572	31,066	28,936	29,227
April	8,320	6,092	6,207	2,069	3,372	464	26,945	28,514	29,490
May	10,139	8,534	7,406	3,009	3,713	532	33,936	31,412	29,704
June	9,650	8,104	7,822	2,370	3,835	553	32,837	30,436	29,674
1995-96 p—									
July	8,173	6,564	6,293	2,161	3,288	426	27,310	28,146	29,379
August	9,208	7,400	6,954	2,614	3,227	475	30,453	29,311	28,887
September	8,399	6,930	7,167	2,240	3,144	470	28,813	28,003	28,331
October	7,747	7,081	6,249	2,125	3,187	399	27,222	28,559	27,798
November	7,766	7,049	6,432	2,476	2,957	449	27,521	26,363	27,213
5 Months ended November —									
1994	41,260	34,854	35,660	15,318	14,569	2,516	146,965
1995 p	41,293	34,994	33,095	11,616	15,802	2,219	141,319
TOTAL RED MEAT (c)									
1992-93	760,949	580,516	877,632	239,833	234,378	67,770	2,797,507
1993-94	779,374	593,630	862,003	249,644	220,899	71,031	2,811,254
1994-95	792,826	609,856	803,232	235,407	200,371	76,194	2,749,829
1994-95 —									
September	74,237	57,090	86,472	22,201	17,955	4,955	267,047	253,265	237,688
October	70,458	54,168	69,619	20,528	18,209	5,047	240,647	237,447	237,595
November	75,185	57,440	71,606	24,280	17,429	6,587	255,420	226,833	235,471
December	60,214	51,019	57,559	21,411	20,352	7,731	220,071	236,518	231,230
January	58,815	48,175	38,545	21,419	16,736	6,829	192,321	230,581	226,227
February	57,259	47,791	52,012	21,165	16,979	6,763	203,822	214,606	222,369
March	70,824	53,260	62,824	23,870	19,087	8,641	240,653	219,004	220,032
April	58,971	43,468	56,234	17,605	15,002	6,444	199,458	218,415	219,096
May	70,832	53,867	72,998	19,731	16,350	7,108	243,647	219,512	218,771
June	61,285	51,566	74,836	14,665	13,775	7,161	226,479	223,679	218,814
1995-96 p—									
July	57,749	44,491	65,947	9,485	13,204	5,021	198,108	214,941	218,523
August	64,970	46,216	75,165	15,506	16,192	4,031	226,211	218,338	217,279
September	60,640	47,010	73,836	19,863	16,620	4,161	225,640	217,901	215,708
October	61,932	56,087	55,056	20,991	18,808	4,761	220,645	211,969	214,174
November	62,824	58,073	64,339	22,434	19,556	5,775	236,115	211,595	212,684
5 Months ended November —									
1994	354,625	260,710	388,224	95,542	82,090	25,518	1,223,378
1995 p	308,115	251,877	334,343	88,278	84,380	23,748	1,106,718

(a) Red meat is shown in carcass weight and excludes offal. (b) Trend estimates for the most recent months are subject to revision when data for subsequent months become available. (c) Buffalo meat produced in the Northern Territory is included in Australian totals.



**RELIABILITY OF NOVEMBER TREND ESTIMATES
FOR PRODUCTION OF RED MEAT**

Readers should exercise care in the interpretation of trend data as the last six observations, in particular, are likely to be revised with either revisions to the underlying data or the addition of data for the month of December.

The table below shows, for red meat production for the six months ended November:

- trend estimates as published;
- trend estimates assuming an increase in seasonally adjusted data for December of 3% on the November figure;
- trend estimates assuming a decrease in seasonally adjusted data for December of 3% on the November figure.

The percentage change of 3% was chosen because the average absolute monthly percentage change in the seasonally adjusted data since the inception of the series has been 3.23%

	Trend as published	Trend change with seasonally adjusted November estimate	
		+3%	-3%
(tonnes, carcass weight)			
1994-95			
June	218,641	218,500	218,764
1995-96p			
July	218,423	218,251	218,716
August	217,223	217,156	217,388
September	215,714	215,944	215,331
October	214,215	215,046	213,021
November	212,777	214,482	210,667
December	—	214,105	208,348

TABLE 3. STOCKS OF FROZEN MEAT(a), AUSTRALIA
(Source: Australian Meat and Livestock Corporation)
(tonnes)

<i>At last Saturday of</i>	<i>Beef(b) and veal</i>	<i>Mutton</i>	<i>Lamb</i>	<i>Pork</i>	<i>Goat</i>	<i>Offal</i>	<i>Total</i>
<i>1994-95 —</i>							
August	29,213	5,570	3,219	1,852	197	7,800	47,851
September	32,567	5,976	3,497	2,217	188	7,964	52,409
October	32,451	6,247	2,955	2,239	134	8,163	52,189
November	34,016	7,166	3,095	2,070	134	8,943	55,424
December	31,146	6,966	2,345	2,142	136	8,010	50,745
January	30,098	6,244	2,037	1,033	100	7,746	47,258
February	31,916	6,451	2,126	1,160	137	7,870	49,660
March	30,793	6,345	2,359	1,194	93	6,996	47,780
April	31,704	6,356	2,085	1,102	63	6,832	48,142
May	32,536	7,079	2,318	1,736	165	7,299	51,133
June	32,511	6,945	2,144	1,759	113	6,961	50,433
<i>1995-96 p—</i>							
July	31,736	7,034	1,871	1,954	132	7,056	49,783
August	32,377	7,208	2,014	3,561	85	7,226	52,471
September	32,333	7,046	2,416	4,319	55	7,389	53,558
October	30,964	6,752	2,775	3,523	62	6,874	50,950

(a) Held in cold stores registered to handle meat for export, and includes meat passed for export, canning and other purposes. Includes boneless and carcass meat.

(b) Includes buffalo meat.

TABLE 4. EXPORTS OF FRESH, FROZEN AND PROCESSED MEAT(a), AUSTRALIA
(tonnes)

	<i>Fresh, chilled or frozen</i>								<i>Pork</i>	<i>Bacon and ham(d)</i>	<i>Canned meat(e)</i>
	<i>Beef(b)(c)</i>		<i>Veal(b)</i>		<i>Mutton(b)</i>		<i>Lamb(b)</i>				
	<i>Bone-in</i>	<i>Bone-out</i>	<i>Bone-in</i>	<i>Bone-out</i>	<i>Bone-in</i>	<i>Bone-out</i>	<i>Bone-in</i>	<i>Bone-out</i>			
1992-93	80,979	739,863	2,087	5,361	80,195	77,394	46,681	5,537	6,974	128	7,270
1993-94	62,662	742,390	1,342	5,818	97,851	70,959	52,719	5,226	5,855	204	10,354
1994-95	59,770	716,512	1,983	6,920	103,243	65,287	47,694	4,594	6,262	160	11,531
<i>1994-95 —</i>											
August	4,382	59,166	202	855	6,332	4,155	4,299	405	582	9	553
September	7,455	63,245	416	774	10,420	5,454	4,268	535	520	2	980
October	8,603	69,899	229	1,194	13,268	5,633	3,920	387	734	20	701
November	6,405	72,328	177	944	13,527	6,172	3,738	254	678	4	816
December	4,596	55,064	138	633	10,232	6,954	4,564	407	543	9	1,154
January	2,659	49,052	38	291	6,765	5,006	2,777	259	426	24	1,012
February	3,604	50,481	104	305	7,035	6,056	3,602	313	363	3	981
March	3,402	61,513	136	325	8,415	6,369	4,360	376	270	7	1,369
April	4,441	56,136	94	183	7,992	5,683	4,190	502	462	24	1,152
May	5,155	59,465	184	275	7,336	5,077	3,578	369	524	19	899
June	5,560	59,010	147	357	5,908	4,601	2,284	390	493	37	1,105
<i>1995-96 p—</i>											
July	5,428	67,545	126	638	5,248	3,850	2,410	432	573	18	1,144
August	3,905	54,281	144	677	4,244	4,176	2,622	444	631	25	1,634
September	4,342	57,661	190	668	5,341	4,390	3,636	626	394	15	1,194
October	5,681	62,819	106	1,009	5,864	5,457	4,734	635	655	2	1,172
<i>4 Months ended</i>											
<i>October —</i>											
1994	23,949	253,464	964	3,607	36,032	19,368	18,601	1,724	2,501	33	3,044
1995 p	19,355	242,306	566	2,992	20,697	17,872	13,402	2,138	2,253	59	5,143

(a) Excludes offal. (b) Factors can be applied to beef, veal, mutton and lamb bone-out figures to derive bone-in carcass weight which, when added to bone-in figures, shows total exports in carcass weight. The factor for beef and veal is 1.5 and for mutton and lamb is 2.0 (Source: Australian Meat and Livestock Corporation). (c) Includes buffalo meat. (d) Cured carcass weight of smoked or cooked bacon and ham. Includes stated net weight of packs of canned bacon and ham. (e) Canned weight. Excludes canned bacon and ham.

TABLE 5. EXPORTS OF LIVE SHEEP(a), AUSTRALIA

	Number (^{'000})	Gross Weight (^{'000 tonnes})	Gross Value (^{\$ '000})	Unit Value(b) (^{\$})
1992-93	5,097.1	270.5	121,933	23.92
1993-94	5,429.8	287.4	148,907	27.42
1994-95	5,533.6	283.6	179,086	32.36
<i>1994-95 —</i>				
August	327.0	16.2	10,591	32.38
September	311.3	15.5	9,894	31.79
October	417.4	21.7	12,358	29.61
November	563.6	30.6	15,053	26.71
December	477.2	25.3	14,448	30.27
January	610.6	32.2	19,355	31.70
February	534.6	27.2	17,886	33.45
March	516.4	27.0	17,116	33.14
April	648.9	33.0	23,176	35.71
May	373.7	18.0	14,001	37.46
June	225.0	10.8	8,656	38.47
<i>1995-96 p --</i>				
July	607.0	30.5	25,311	41.70
August	495.8	24.1	20,974	42.30
September	413.4	21.1	16,567	40.08
October	269.5	13.9	9,718	36.06
<i>4 Months ended October —</i>				
1994	1,583.4	79.5	49,395	31.20
1995 p	1,785.7	89.5	72,570	40.64

(a) Excludes sheep for breeding. (b) Obtained by dividing the gross value by the number of sheep exported.

TABLE 6. EXPORTS OF LIVE CATTLE(a), AUSTRALIA

	Number (^{'000})	Gross Weight (^{'000 tonnes})	Gross Value (^{\$ '000})	Unit Value(b) (^{\$})
1992-93	148.6	50.4	69,847	470.19
1993-94	234.7	79.9	115,020	489.97
1994-95	385.7	136.5	201,948	523.52
<i>1994-95 —</i>				
August	27.6	9.4	13,144	476.27
September	29.5	10.3	13,382	454.18
October	23.9	8.9	11,624	485.41
November	33.5	11.2	17,523	523.78
December	36.0	13.1	18,349	509.02
January	29.3	11.3	16,403	559.33
February	27.8	10.9	15,892	571.74
March	31.6	11.3	16,651	527.03
April	34.8	12.7	17,955	515.37
May	41.6	13.8	23,456	563.59
June	47.4	16.6	26,687	563.05
<i>1995-96 p --</i>				
July	49.5	17.5	27,432	554.64
August	49.7	16.1	28,009	564.07
September	37.2	12.1	20,488	550.99
October	45.9	15.4	24,754	539.23
<i>4 Months ended October —</i>				
1994	103.7	35.8	49,032	472.95
1995 p	182.2	61.1	100,683	552.58

(a) Excludes cattle for breeding. (b) Obtained by dividing the gross value by the number of cattle exported.

TABLE 7. CHICKENS SLAUGHTERED (a)
('000)

	NSW	Vic.	Qld	SA	WA	Aust. (b)
1992-93	117,085.9	78,614.7	52,454.7	25,396.6	30,575.8	304,127.8
1993-94	129,735.5	85,797.9	54,133.1	28,376.4	31,481.8	329,524.7
1994-95	134,719.4	79,799.4	56,057.2	28,778.9	33,938.6	333,293.5
<i>1994-95 —</i>						
September	11,958.6	6,364.0	4,794.5	2,382.4	2,838.4	28,337.9
October	10,864.4	6,874.2	4,999.3	2,507.6	2,836.8	28,082.3
November	10,463.1	5,882.2	4,350.1	2,223.5	2,721.8	25,640.7
December	16,298.6	9,646.3	4,618.1	2,427.1	3,417.8	36,407.9
January	8,343.6	6,548.4	4,931.4	2,521.4	2,920.3	25,265.0
February	10,820.8	6,200.2	4,418.4	2,303.7	2,725.7	26,468.8
March	12,385.8	6,731.2	4,847.0	2,610.5	2,678.9	29,253.4
April	10,444.0	6,520.6	4,605.5	2,782.3	2,742.9	27,095.2
May	10,389.2	6,208.8	4,412.3	2,141.7	2,725.6	25,877.6
June	11,051.0	6,305.2	4,618.3	2,189.9	2,879.0	27,043.4
<i>1995-96 p—</i>						
July	11,164.2	6,528.3	5,408.1	2,420.8	3,040.6	28,562.1
August	10,753.6	5,966.2	4,428.5	2,057.1	2,593.9	25,799.4
September	11,331.8	6,547.5	4,826.6	2,226.2	2,896.9	27,829.1
October	10,537.9	6,470.7	4,112.7	2,178.6	3,069.4	26,369.3
November	9,125.2	6,064.2	5,116.4	2,297.1	3,312.0	25,914.8
<i>5 Months ended November —</i>						
1994	54,986.5	31,638.7	23,606.1	11,802.3	13,848.5	135,882.1
1995 p	52,912.7	31,577.0	23,892.4	11,179.8	14,912.8	134,474.7

(a) Comprises broilers, fryers and roasters. (b) Excludes Tasmania, the Northern Territory and the Australian Capital Territory.

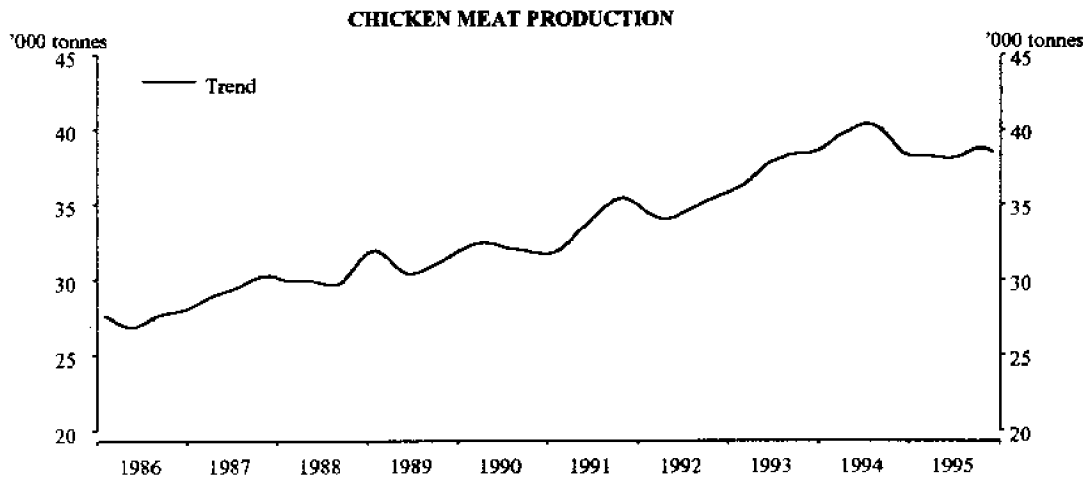
TABLE 8. CHICKEN MEAT PRODUCED (a)
(Tonnes carcass weight)

	NSW	Vic.	Qld	SA	WA	Aust. (b)	Trend estimate (c)
1992-93	176,465	114,587	67,305	38,619	37,740	434,716	..
1993-94	193,137	123,529	72,000	40,671	39,386	468,722	..
1994-95	195,195	111,020	74,477	39,032	42,007	461,729	..
<i>1994-95 —</i>							
September	18,426	9,126	6,372	3,284	3,475	40,682	39,547
October	16,157	9,574	6,706	3,209	3,428	39,074	38,956
November	15,370	8,051	5,692	2,845	3,372	35,331	38,474
December	18,354	9,944	5,858	3,321	4,259	41,737	38,235
January	12,702	8,879	6,421	3,491	3,644	35,136	38,191
February	16,211	9,222	5,879	3,168	3,316	37,796	38,252
March	19,072	9,995	6,437	3,563	3,315	42,383	38,216
April	15,352	9,294	5,896	3,928	3,353	37,823	38,151
May	15,342	8,921	5,898	3,028	3,426	36,615	38,075
June	16,026	8,835	6,141	2,933	3,640	37,575	38,142
<i>1995-96 p—</i>							
July	16,385	9,180	7,153	3,465	3,812	39,996	38,329
August	15,976	9,350	5,550	2,656	3,249	36,781	38,590
September	16,867	9,703	6,210	3,111	3,538	39,429	38,755
October	15,394	9,669	5,277	2,961	3,896	37,197	38,739
November	13,504	9,005	6,773	3,182	4,260	36,724	38,499
<i>5 Months ended November —</i>							
1994	82,135	45,929	31,948	15,599	17,054	192,664	..
1995 p	78,127	46,908	30,962	15,375	18,755	190,127	..

(a) Chicken meat is shown in dressed weight of whole birds, pieces and giblets. (b) Excludes Tasmania, the Northern Territory and the Australian Capital Territory.

(c) Trend estimates for the most recent months are subject to revision when data for subsequent months become available.

Note: Some slaughtering and meat production statistics for 'Ducks and Drakes' and 'Other Fowls and Turkeys' are available by contacting the ABS on Canberra 252 5337 or by writing to PO Box 10, Belconnen ACT 2616 (Attention: Agriculture Section).



RELIABILITY OF NOVEMBER TREND ESTIMATES FOR CHICKEN MEAT

Readers should exercise care in the interpretation of trend data as the last six observations, in particular, are likely to be revised with either revisions to the underlying data or the addition of data for the month of December.

The table below shows, for chicken meat production for the six months ended November:

- trend estimates as published;
- trend estimates assuming an increase in seasonally adjusted data for December of 4% on the November figure;
- trend estimates assuming a decrease in seasonally adjusted data for December of 4% on the November figure.

The percentage change of 4% was chosen because the average absolute monthly percentage change in the seasonally adjusted data since the inception of the series has been 4.16%

	<i>Trend as published</i>	<i>Trend change with seasonally adjusted November estimate</i>	
		+4%	-4%
(tonnes, carcass weight)			
1994-95			
June	38,142	38,132	38,192
1995-96p			
July	38,329	38,323	38,428
August	38,590	38,575	38,627
September	38,755	38,793	38,654
October	38,739	38,742	38,283
November	38,499	38,541	37,677
December	—	38,309	37,005

TABLE 9. WHOLE MILK INTAKE BY FACTORIES (a)
(Source: Australian Dairy Corporation)
(Million Litres)

	<i>NSW</i>	<i>Vic.</i>	<i>Qld</i>	<i>SA</i>	<i>WA</i>	<i>Tas.</i>	<i>Aust.</i>	<i>Seasonality adjusted</i>	<i>Trend estimate(b)</i>
1992-93	997	4,456	702	436	324	413	7,327
1993-94	1,098	4,967	764	456	344	447	8,077
1994-95	1,087	5,113	741	484	343	436	8,206
<i>1994-95 —</i>									
August	92	368	63	41	33	20	618	697	704
September	96	565	64	47	33	44	849	701	700
October	101	700	66	53	33	63	1,016	694	695
November	96	688	62	49	28	66	988	695	688
December	96	626	64	46	26	62	919	688	678
January	97	513	65	42	26	46	789	659	667
February	86	391	58	34	25	36	630	662	661
March	89	340	65	33	28	34	589	653	661
April	81	248	57	32	27	25	469	654	670
May	82	224	57	35	28	19	443	671	684
June	82	213	59	36	28	12	430	734	698
<i>1995-96 p—</i>									
July	87	245	62	39	31	10	474	721	710
August	92	373	63	45	32	19	623	703	718
September	97	586	65	51	32	46	876	724	724
October	105	726	67	55	32	68	1,054	722	727
<i>4 Months ended October —</i>									
1994	378	1,872	254	178	128	137	2,948
1995 p	381	1,930	256	190	127	143	3,027

(a) Includes the whole milk equivalent of farm cream intake. (b) Trend estimates for the most recent months are subject to revision when data for subsequent months become available.

TABLE 10. MARKET MILK SALES BY FACTORIES (a)
(Source: Australian Dairy Corporation)
(Million Litres)

	<i>NSW</i>	<i>Vic.</i>	<i>Qld</i>	<i>SA</i>	<i>WA</i>	<i>Tas.</i>	<i>Aust.</i>
1992-93	599	449	348	153	177	51	1,777
1993-94	607	454	356	159	181	53	1,811
1994-95	605	452	368	167	188	52	1,832
<i>1994-95 —</i>							
August	52	39	32	14	16	5	157
September	50	38	30	14	16	5	152
October	52	38	31	14	15	5	154
November	50	37	30	14	15	4	151
December	49	37	31	15	15	4	150
January	50	36	30	14	16	4	150
February	47	35	29	13	15	4	142
March	52	39	33	15	17	5	160
April	50	37	30	13	15	4	149
May	53	40	32	14	17	4	159
June	51	39	31	13	16	4	154
<i>1995-96 p—</i>							
July	53	38	32	13	15	4	156
August	52	40	32	14	16	4	158
September	50	38	31	13	15	4	151
October	52	40	31	14	16	4	157
<i>4 Months ended October —</i>							
1994	204	153	124	56	62	18	617
1995 p	206	155	126	54	63	17	621

(a) Includes white, flavoured, high and low fat milk, uht milk.



**RELIABILITY OF OCTOBER TREND ESTIMATES
FOR WHOLE MILK INTAKE BY FACTORIES**

Readers should exercise care in the interpretation of trend data as the last six observations, in particular, are likely to be revised with either revisions to the underlying data or the addition of data for the month of November.

The table below shows, for whole milk intake by factories for the six months ended October:

- trend estimates as published;
- trend estimates assuming an increase in seasonally adjusted data for November of 2% on the October figure;
- trend estimates assuming a decrease in seasonally adjusted data for November of 2% on the October figure.

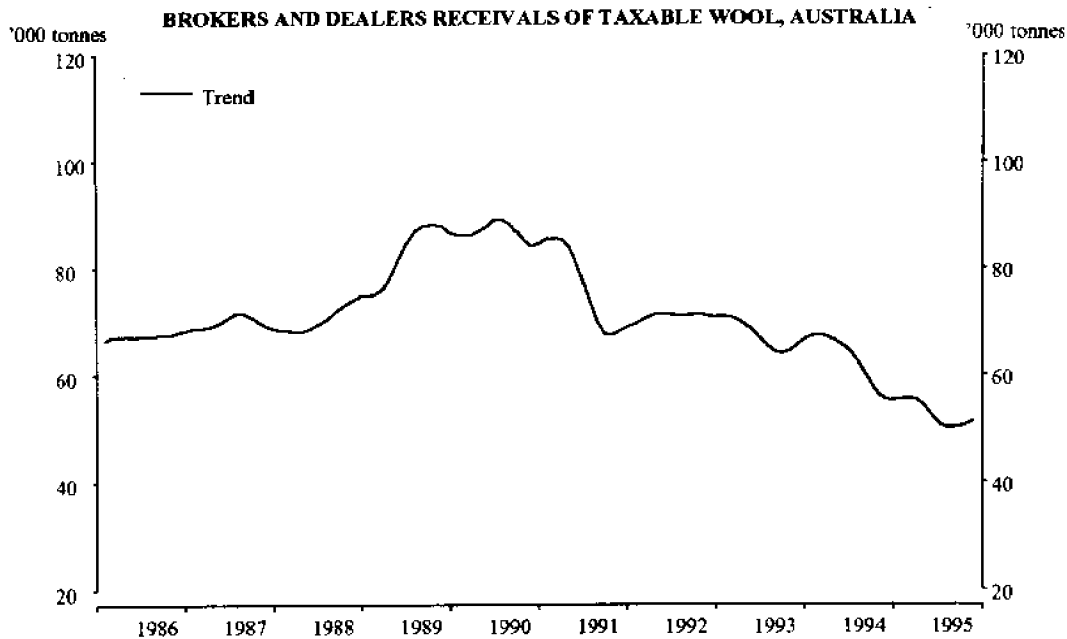
The percentage change of 2% was chosen because the average absolute monthly percentage change in the seasonally adjusted data since the inception of the series has been 1.96%

	<i>Trend as published</i>	<i>Trend change with seasonally adjusted October estimate</i>	
		+2%	-2%
(tonnes, carcass weight)			
1994-95			
May	684	683	684
June	698	698	699
1995-96p			
July	710	710	711
August	718	718	717
September	724	724	720
October	727	728	720
November	—	730	718

TABLE 11. BROKERS AND DEALERS RECEIVALS OF TAXABLE WOOL
(Tonnes)

	Australia						Total	% of Total received by brokers	Seas- onally adjusted	Trend estimate(a)
	NSW	Vic.	Qld	SA	WA	Tas.				
1992-93	252,176	203,572	57,998	109,322	203,626	17,384	844,077	83.1
1993-94	206,222	190,047	55,110	102,340	212,266	18,633	784,618	81.0
1994-95 r	178,118	172,503	52,127	86,976	173,529	17,557	680,810	83.5
<i>1994-95 —</i>										
September	26,251	28,392	5,906	15,684	29,352	1,819	107,404	86.8	64,815	58,092
October	21,890	25,888	4,080	12,546	22,263	1,940	88,606	85.3	54,779	56,175
November	18,303	23,633	2,623	9,439	15,239	3,027	72,264	81.6	48,961	55,282
December	11,380	16,103	1,661	4,267	6,487	1,608	41,507	79.1	54,686	55,153
January	10,076	8,686	2,233	4,069	10,628	1,761	37,452	83.4	55,513	55,403
February	12,557	11,470	3,774	6,117	15,184	860	49,961	83.5	60,679	55,619
March	13,088	11,099	5,167	7,385	16,126	721	53,585	82.1	57,025	55,404
April	8,786	6,662	3,768	5,241	9,489	699	34,644	81.0	53,473	54,401
May	9,273	6,276	4,476	3,732	6,892	1,697	32,345	81.2	46,676	52,655
June	9,162	5,600	4,864	2,430	5,147	571	27,774	78.5	56,383	51,065
<i>1995-96 p —</i>										
July	11,769	6,118	4,989	4,501	9,649	827	37,853	81.5	48,827	50,249
August	17,212	14,927	5,528	10,519	22,440	1,460	72,086	88.3	50,315	50,131
September	r18,711	20,507	4,778	12,775	19,636	1,500	77,907	87.9	46,618	50,312
October	r20,115	29,720	3,637	13,027	21,145	1,792	89,436	88.8	52,877	50,671
November	18,419	22,489	2,042	9,657	18,360	2,460	73,427	86.9	52,639	51,261
<i>5 Months ended</i>										
<i>November —</i>										
1994	103,798	106,608	26,184	53,736	103,575	9,639	403,540	83.6
1995 p	86,226	93,760	20,974	50,480	91,229	8,040	350,709	88.0

(a) Trend estimates for the most recent months are subject to revision when data for the subsequent months become available.



**RELIABILITY OF NOVEMBER TREND ESTIMATES
FOR WOOL RECEIVALS**

Readers should exercise care in the interpretation of trend data as the last six observations, in particular, are likely to be revised with either revisions to the underlying data or the addition of data for the month of December.

The table below shows, for wool receivals for the six months ended November:

- trend estimates as published;
- trend estimates assuming an increase in seasonally adjusted data for December of 9% on the November figure;
- trend estimates assuming a decrease in seasonally adjusted data for December of 9% on the November figure.

The percentage change of 9% was chosen because the average absolute monthly percentage change in the seasonally adjusted data since the inception of the series has been 9.36%

	<i>Trend as published</i>	<i>Trend change with seasonally adjusted November estimate</i>	
		+9%	-9%
		(tonnes, carcass weight)	
1994-95			
June	51,065	50,901	51,092
1995-96p			
July	50,249	49,950	50,285
August	50,131	49,979	50,146
September	50,312	50,660	50,218
October	50,671	51,664	50,205
November	51,261	52,942	50,192
December	—	53,900	49,750

EXPLANATORY NOTES

Introduction

This publication contains information (preliminary where indicated) on livestock slaughterings, meat production, stocks of frozen meat, exports of live sheep and live cattle, exports of fresh, frozen and processed meat, and whole milk intake by factories, market milk sales by factories and receivals of taxable wool by wool brokers and dealers.

Livestock slaughterings and meat production

2. The statistics on slaughterings and meat production are based on a monthly collection from abattoirs and other major slaughtering establishments and include estimates of animals slaughtered on farms and by country butchers and other small slaughtering establishments.

3. Care should be taken when using this information as the figures only relate to slaughterings for human consumption and do not include animals condemned or those killed for boiling down. Since July 1994 the definition of livestock categories between States has been standardised.

4. Poultry slaughterings statistics have been compiled from returns supplied by commercial poultry slaughtering establishments. Producers in the Northern Territory and the Australian Capital Territory and the many very small producers are excluded from the collection; however, the statistics represent a high level of coverage.

Live sheep and cattle exports

5. These tables contain statistics of the number of live sheep and cattle exported, the gross weight, gross value and unit value. Sheep or cattle exported for breeding are excluded.

Milk

6. Tables 9 and 10 contain statistics collected by the Australian Dairy Corporation (ADC) on whole milk intake and market milk sales by factories.

Wool receivals

7. The statistics in Table 11 show the amount of taxable wool received by brokers and dealers from wool producers. It excludes wool received by brokers on which tax has already been paid by other dealers (private buyers) or brokers.

8. The information shown is on the basis of the State in which wool has actually been received and does not necessarily reflect the production of wool in that State.

Seasonal adjustment

9. Details of seasonally adjusted figures for livestock slaughterings, red meat, milk and wool are shown in Tables 1, 2, 9 and 11 respectively. Information on the methods used in seasonally adjusting these series is available on request.

Trend Estimates and Sensitivity Analysis

10. A trend estimate is obtained by reducing the irregular component from the seasonally adjusted series. In this publication trend estimates are

generally derived by applying a 13 term Henderson moving average to the seasonally adjusted series. The 13 term Henderson, (like all Henderson averages) is symmetric, but as the end of a time series is approached, asymmetric forms of the average are applied. While the asymmetric weights enable the trend to be calculated for the latest month, it does result in revisions to the last six estimates as additional observations become available.

11. Sensitivity analysis indicates the potential magnitude and direction of revisions created to the last six estimates. It aims to show how a specified movement in the seasonally adjusted data in the next period will affect the trend path of the time series. By showing how sensitive the trend estimates are to the addition of new data, the analysis provides information which can be used in the assessment of the trend's stability. For further information, see *A Guide to Interpreting Time Series - Monitoring "Trends", an Overview* (1348.0) or contact the Assistant Director, Time Series Analysis on (06) 252 6345.

Related publications

12. Users may also wish to refer to the following priced publication which is available on request:

Livestock and Livestock Products, Australia (7221.0)

Apparent Consumption of Selected Foodstuffs, Australia 1994-95, Preliminary (4315.0)

13. Current publications produced by the ABS are listed in the Catalogue of Publications and Products, Australia (1101.0). The ABS also issues, on Tuesdays and Fridays, a Publication Advice (1105.0) which lists publications to be released in the next few days. The Catalogue and Publications Advice are available from any ABS office.

Next release date

14. The expected release date for the December 1995 issue of this publication is 9 February 1996. The date can be confirmed a few days prior to release by telephoning (06) 252 5226.

Symbols and other usages

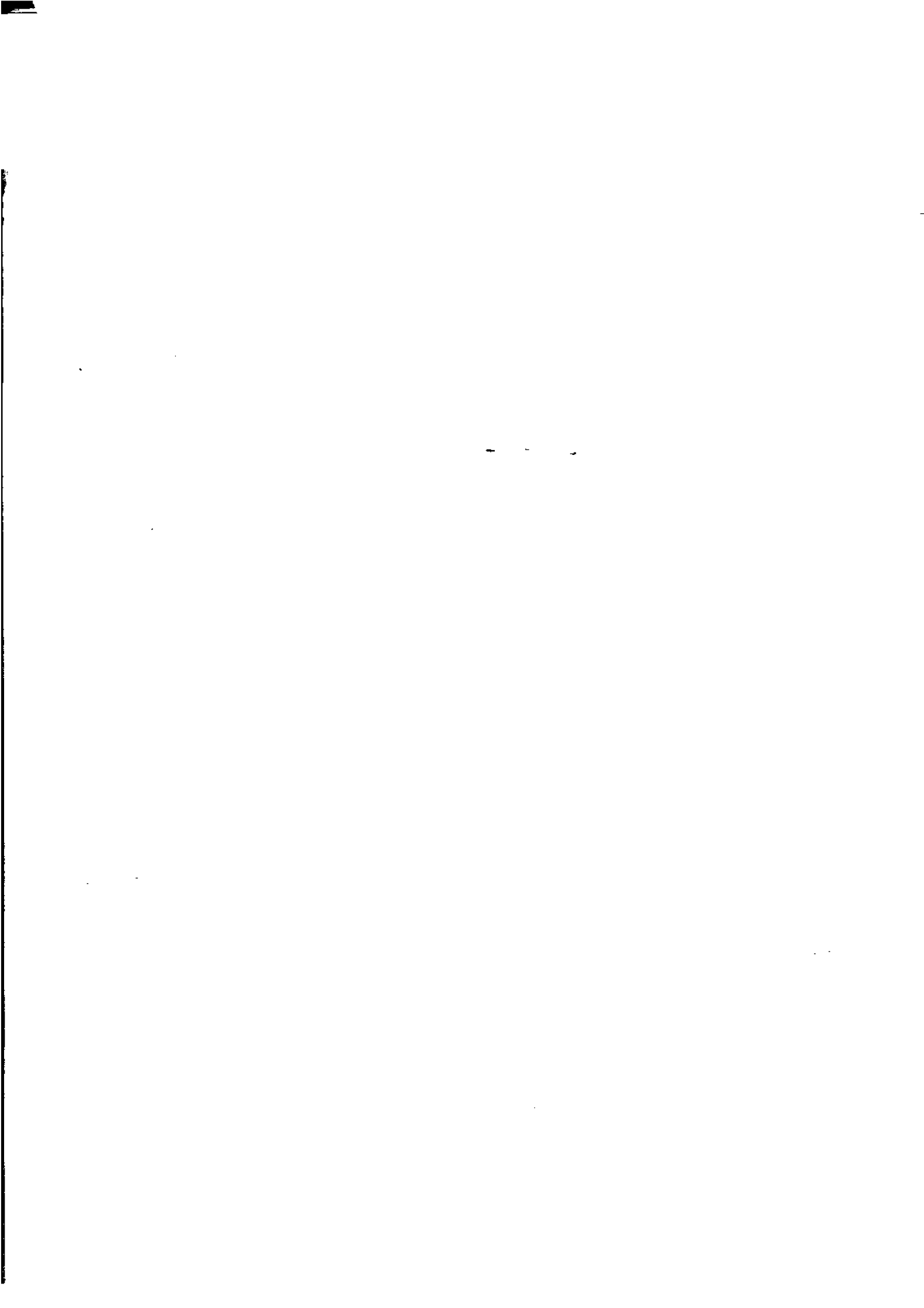
p preliminary
 .. not applicable
 — nil or rounded to zero

15. The figures shown in this publication have been revised where necessary and as a consequence may not agree with similar data shown in previous publications.

16. Where figures have been rounded, discrepancies may occur between sums of the component items and totals.

17. Unless indicated otherwise, Australian totals include data for all States and both Territories.

W. McLennan
 Australian Statistician



© Commonwealth of Australia 1996

Recommended retail price: \$13.00



2721500011959
ISSN 0728-4047